

Spatial extent of hydrological drought in the United States: changes and hydro-meteorological drivers

Manuela Brunner, Daniel Swain, Eric Gilleland, Andrew Wood



manuela.brunner@hydrology.uni-freiburg.de

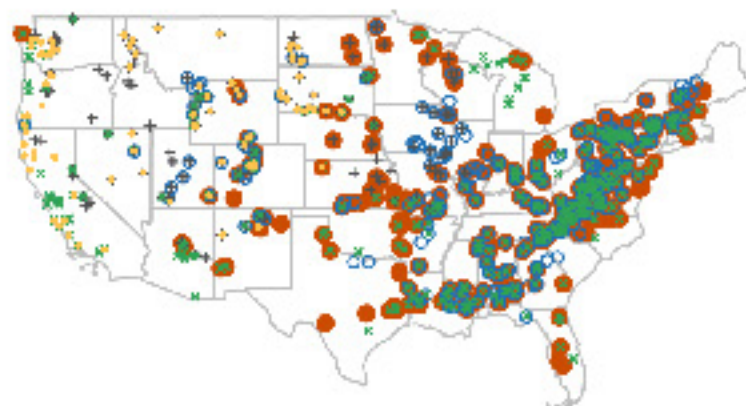


@ManuelaBrunner

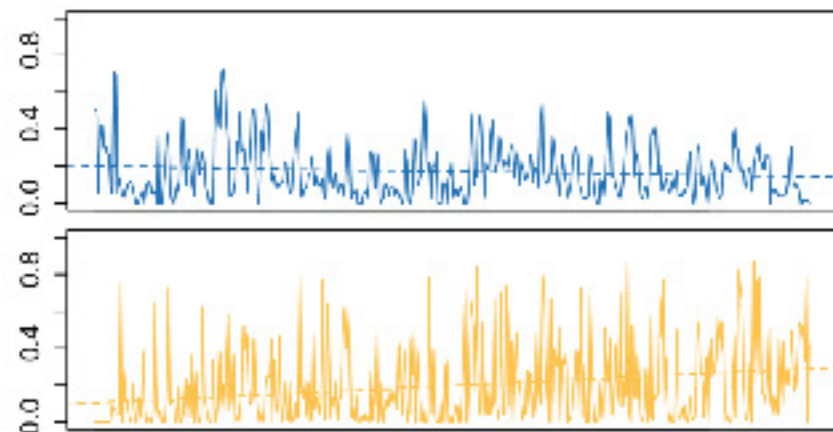
Spatial droughts represent a water management challenge



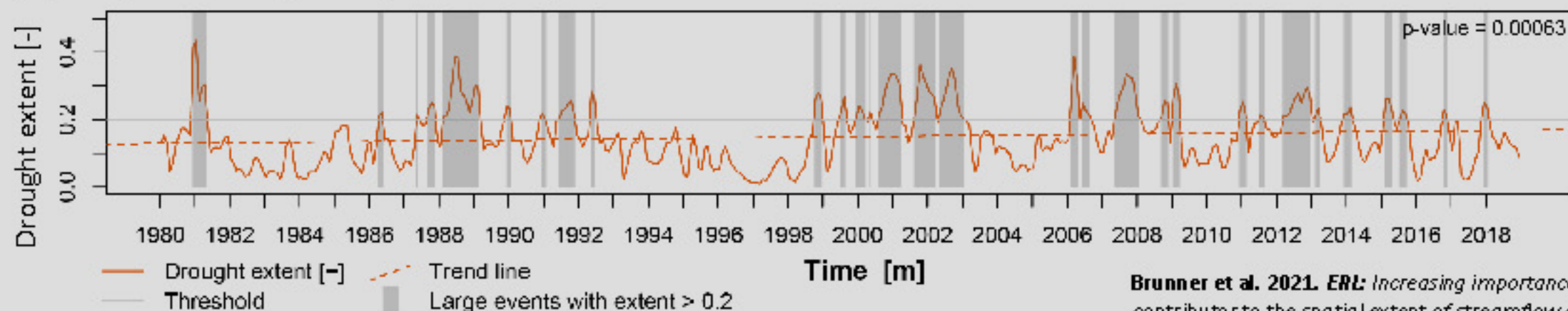
(2) Role of hydro-meteorological drivers



(3) Changes in driver importance over time



(1) Temporal changes in spatial drought extent



Brunner et al. 2021. *ERL*: Increasing importance of temperature as a contributor to the spatial extent of streamflow drought.